

### BOQ Reference:

**11.00: ELECTRICAL**

**11.01:** Lighting circuit 1.5sqmm as per scheme

**11.02:** UPS/RAW Power circuit 2.5sqmm as per scheme

**11.03:** 32A Raw power circuit 4sqmm for AC as per scheme

**11.04:** Data circuit cat 6A as per scheme

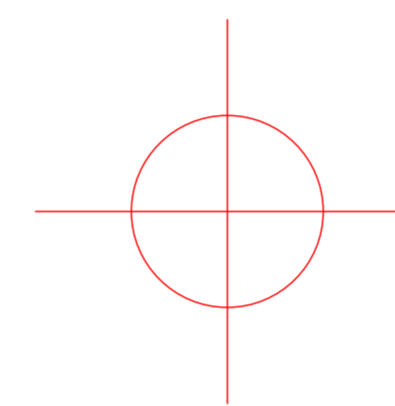
**12.00: HVAC Control Room**

**12.01:** Existing AC Units at site

**11.00: HVAC Dubbing Booth**

**11.01:** 1 Ton AC with Sound Power Levels of Indoor Unit(Low/Mid/High/SHi) in dB(A) - 22/31/38/45

### Legend:



Ceiling Lights



CAT 6A data connection



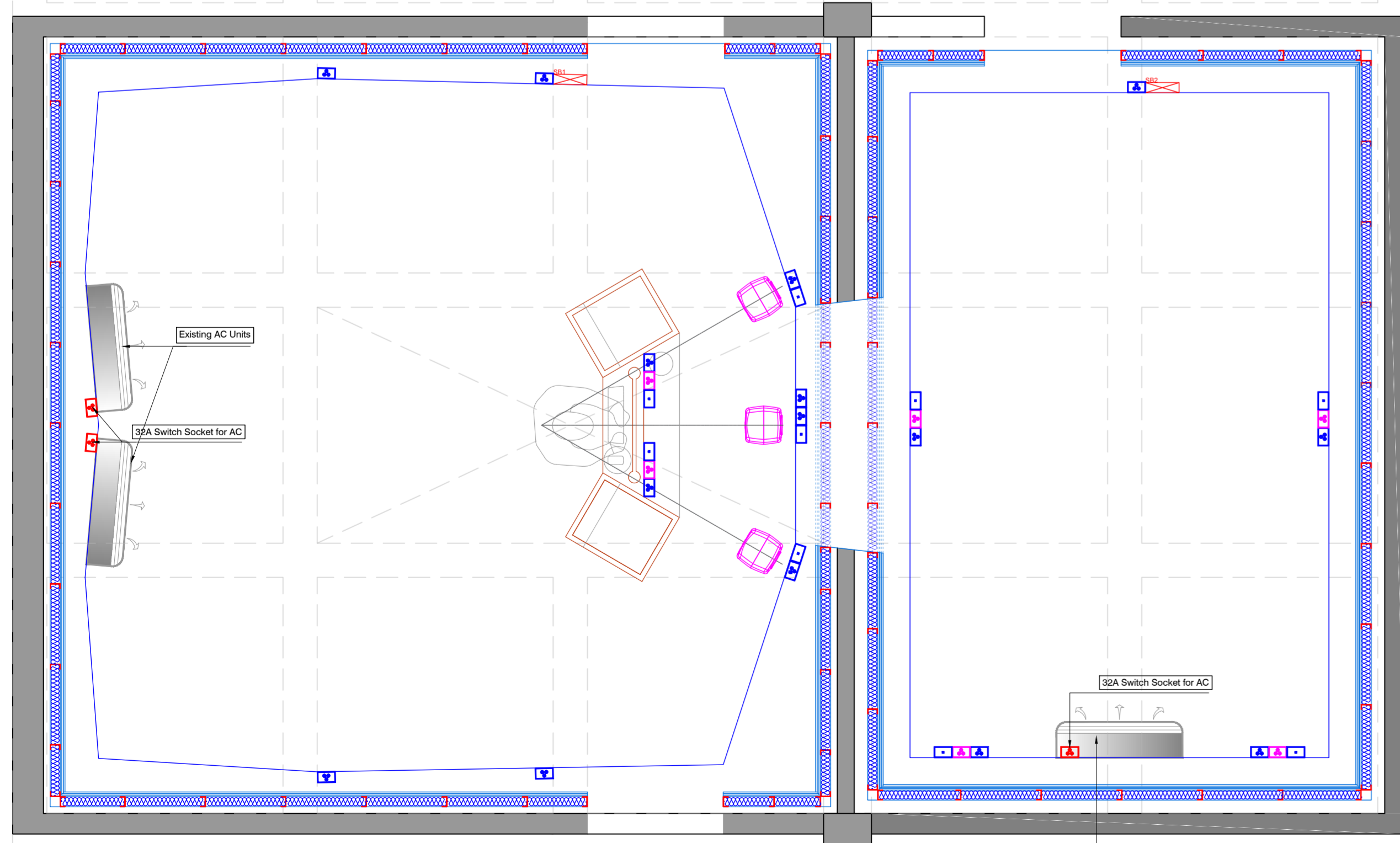
UPS Power Circuit



RAW Power Circuit



32A RAW Power Circuit for AC



1 Ton AC Unit with Indoor Unit SPL value(Low/Mid/High/SHi) in dB(A) - 22/31/38/45

REV.	DATE	NOTE

PROJECT	NID
DWG TITLE	Wall Treatment Scheme
PROJECT NO	1696
DWG NO	S7
SCALE	NTS
FORMAT	XX
DATE	13.05.2021
DRAWN BY	VB
CHECKED BY	KT

